



Introduction to Service Activities



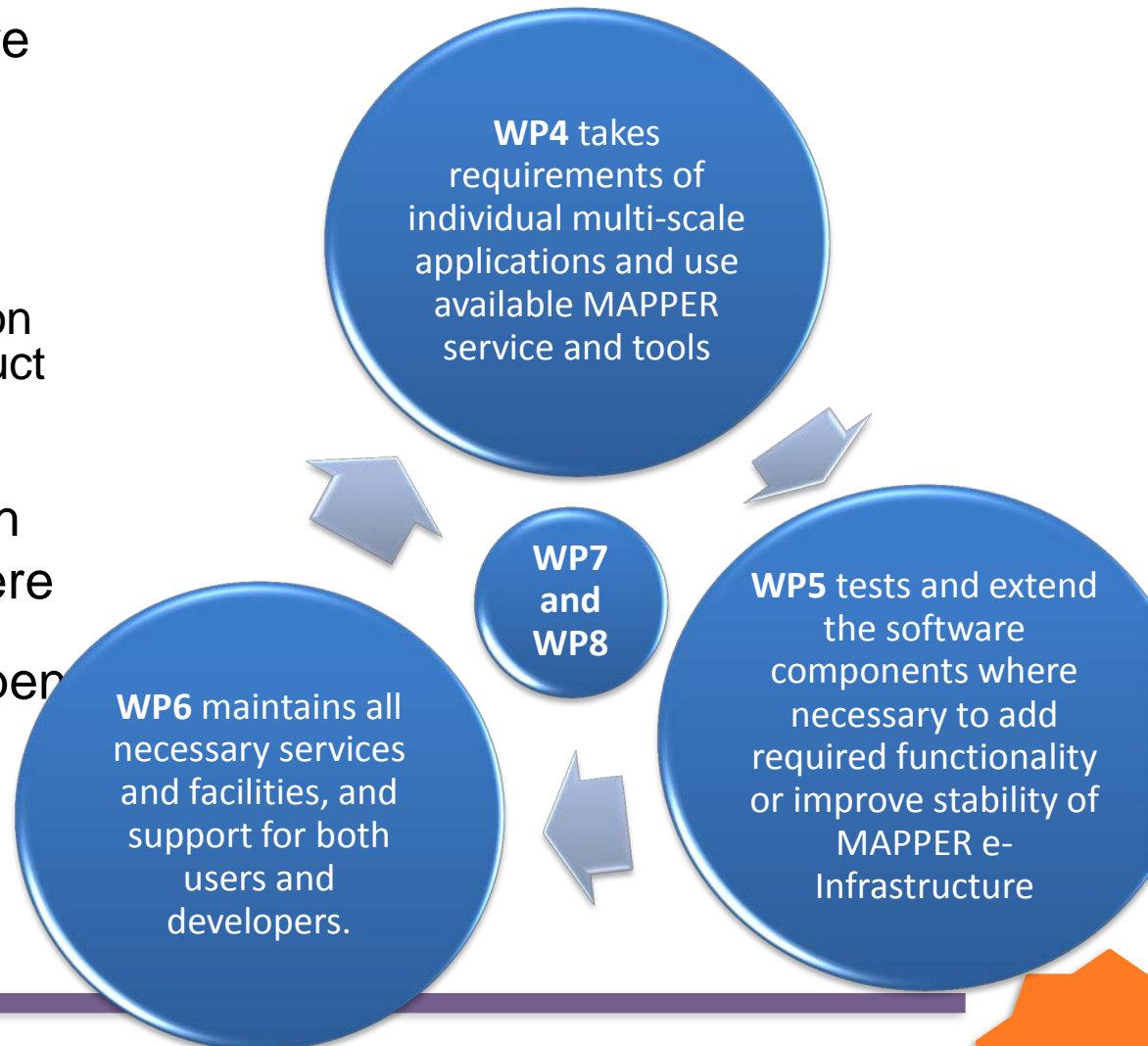
24/11/11

Krzysztof Kurowski, All

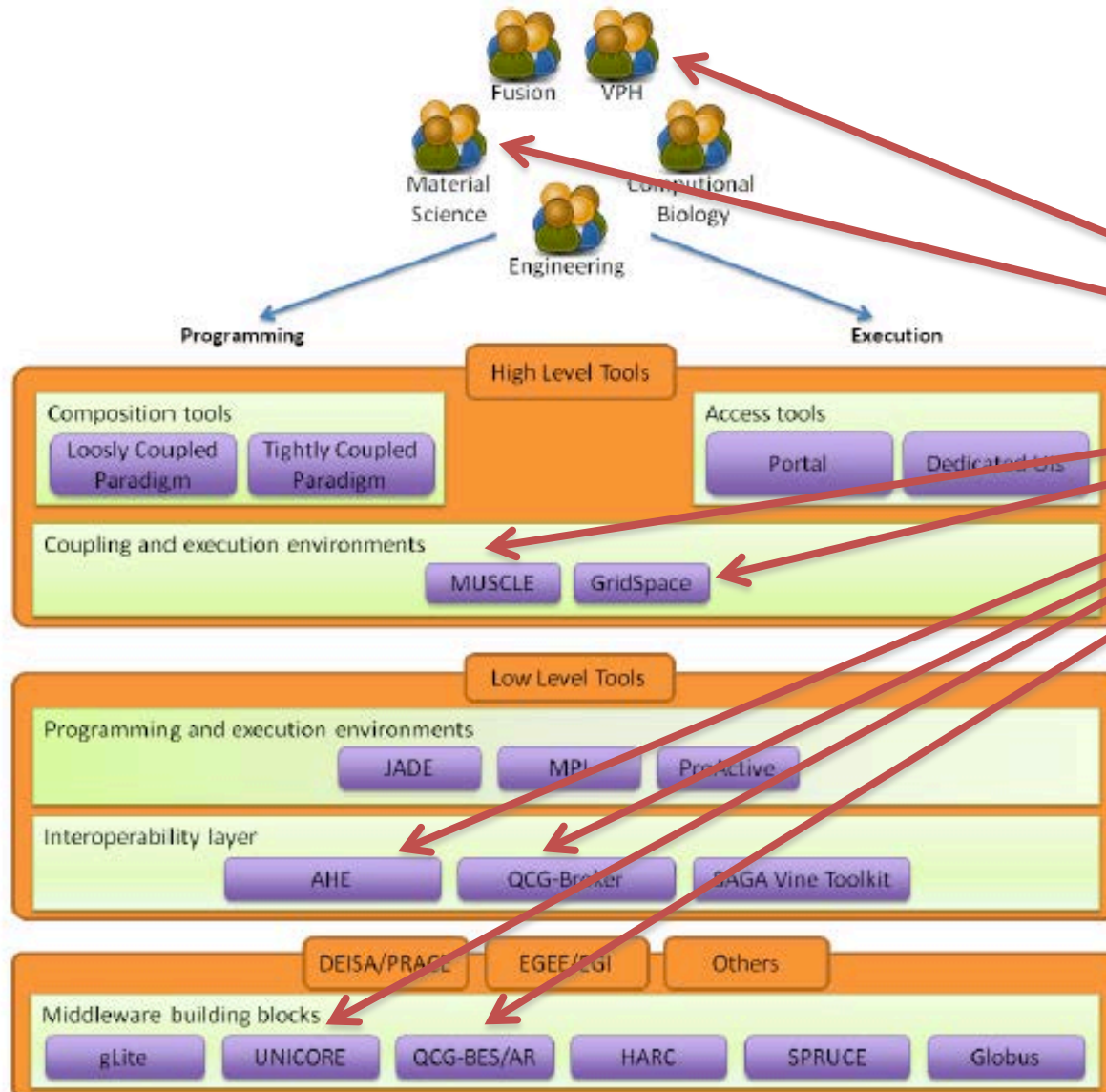
Overview and goals



- The objectives of Service Activities (WP 4, 5 and 6) are the following:
 - adaptation & check,
 - integrate & test,
 - operation & support,
 - MAPPER e-Infrastructure on which end-users can conduct multiscale research.
- Thus, end-users can easily conduct multi-scale research
- Work closely with JRAs where design and development of multiscale applications happen



Achievements



Software components
selected for the first
MAPPER review

Fast vs. Deep tracks (2010)



Fast Track Components		Deep Track Components	
MPI	+	JADE	-
AHE	+	PROACTIVE	?
GridSpace	+	MUSCLE	+
RealityGrid Steering	-	SAGA-Vine Toolkit	+
QosCosGrid Broker	+	HARC	-
		SPRUCE	?

2011

2012, 2013

Fast vs. Deep tracks (2011)



	Fast Track Components		Deep Track Components	
Users tools (coupling and execution env.)	MAD & MaMe	+	MAD & MaMe (new features)	
	Vine Toolkit	+	Vine Toolkit, Kepler	
	SAGA	+	SAGA (new features)	
Interoperability layer	Nagios	+	UMD, Inca, Accounting, Information System	
	AHE	+	AHE (new features)	
	QCG-Broker	+	QCG-Broker (AR in EGI/PRACE, new features)	
	GridSpace	+	GridSpace (new features)	
e-Infrastructure (middleware building blocks)	MPI	+	QCG-OMPI, MPWide	
	MUSCLE	+	MUSCLE (new features)	
	QCG-Computing/Notif	+	QCG-Computing/Notif (new standards)	
	UNICORE	+		
	GridFTP	+		

1st Review demonstrations

Joint Task force between MAPPER, EGI, and PRACE



- Collaborate with EGI and PRACE to introduce new capabilities and policies onto e-Infrastructures
- Deliver new application tools, problem solving environments and QosCosGrid (QCG) middleware services to meet new end-users and communities needs
- Work closely with various communities to perform distributed multiscale simulations and complex experiments



1st EU review
selected two apps
on MAPPER
e-Infrastructure
(EGI and PRACE
resources)

Taskforce
established

MoU signed

1st evaluation

2011 05 06 08 09 11 ... 2012 ... 2013

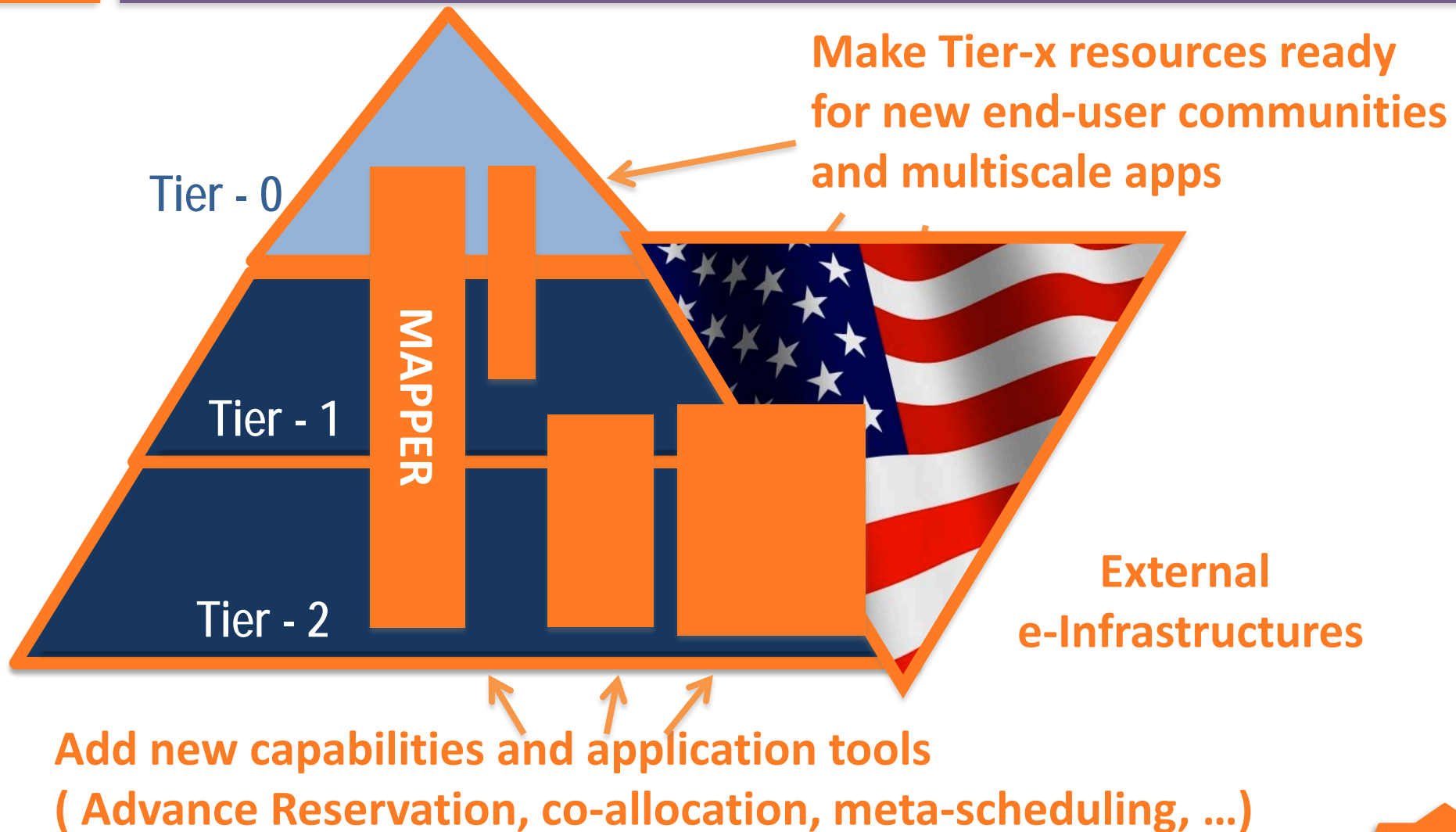
Tier - 0

Tier - 1

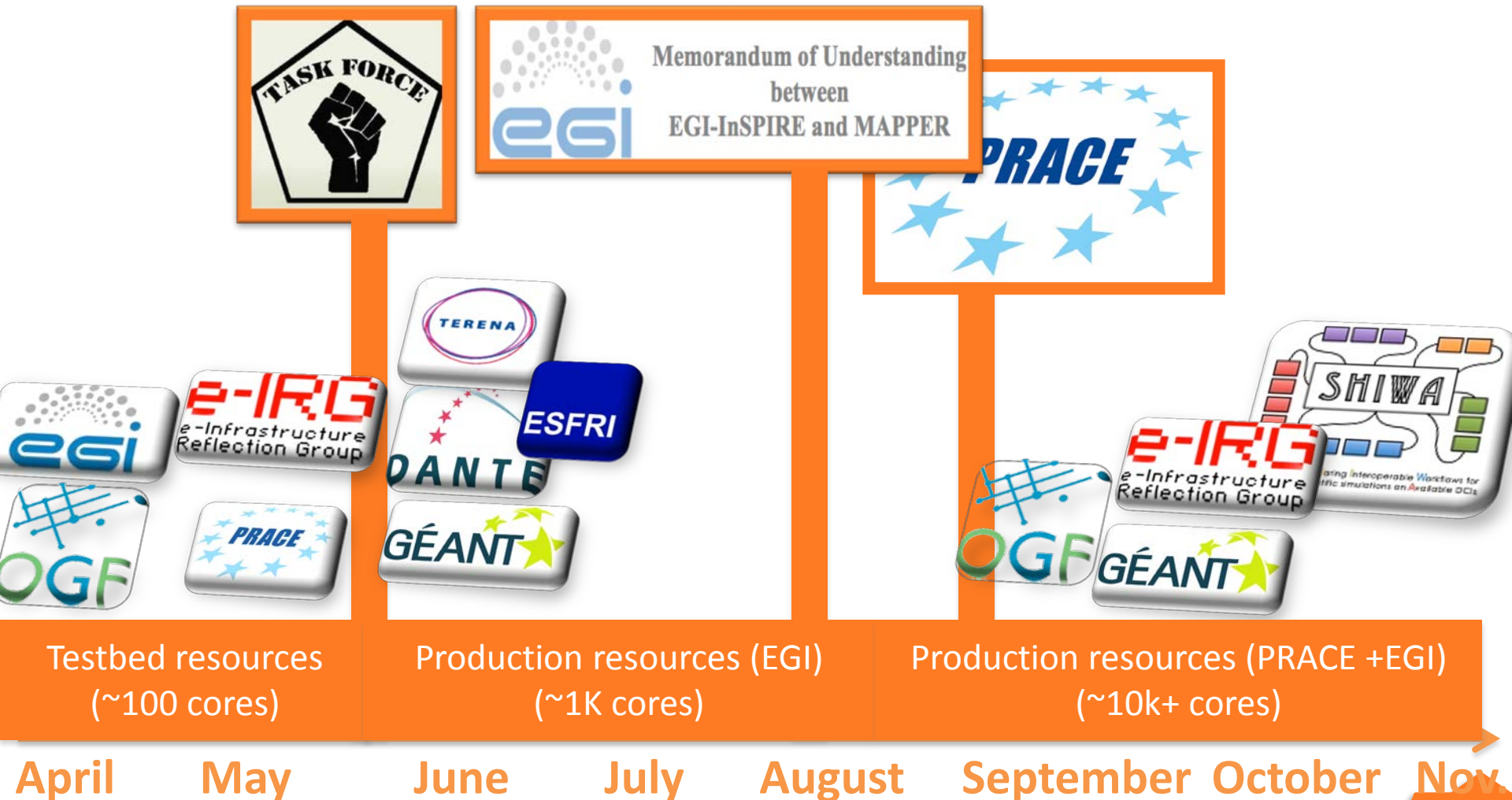
Tier - 2

MAPPER Task force

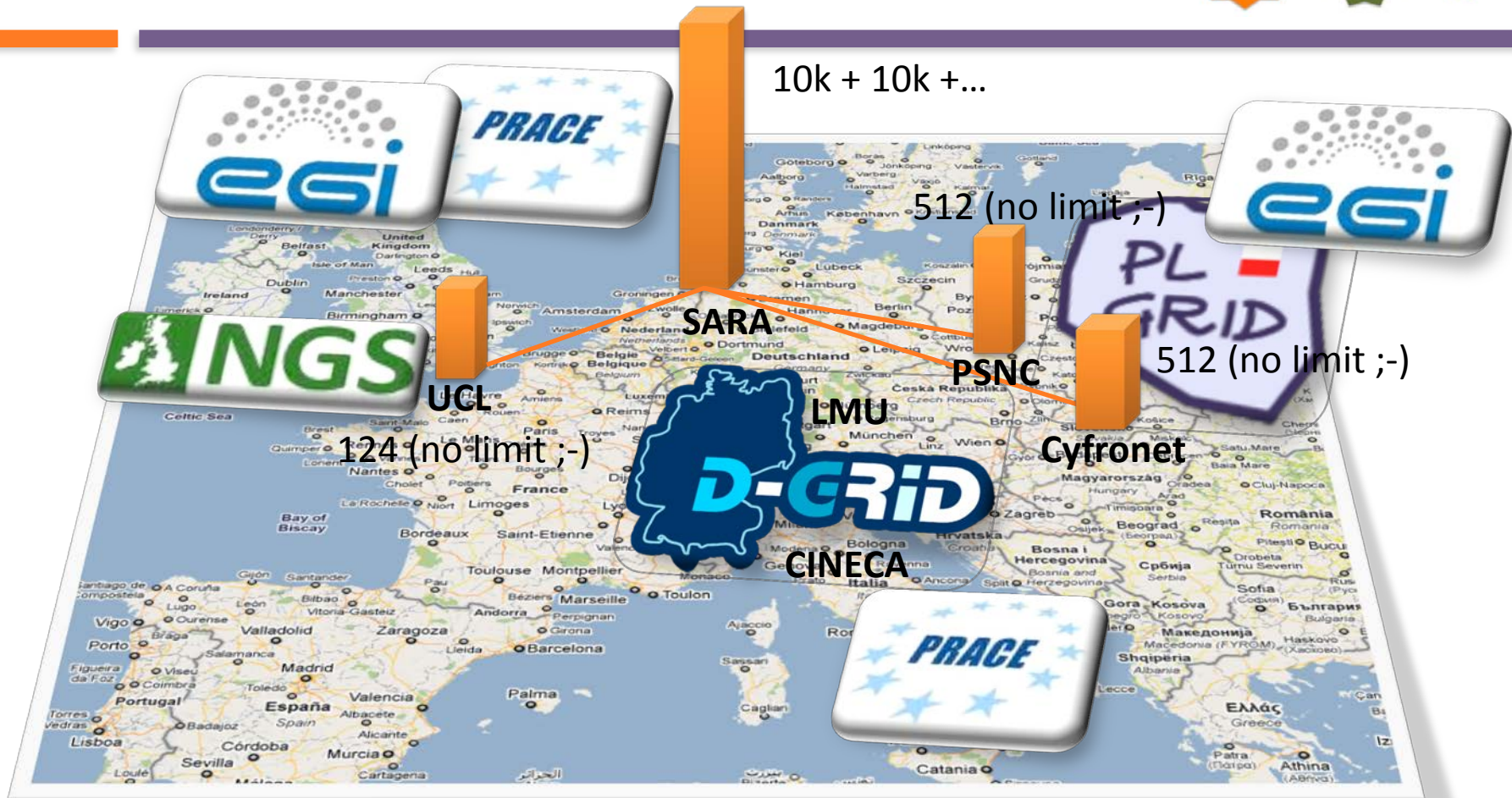
New capabilities on e-Infrastructures



Achievements



Achievements



EGI and PRACE monitoring capabilities

qcg-broker.man.poznan.pl	QCG.Broker	https://qcg-broker.man.poznan.pl:8443/qcg/services/JobFactory	QCG-Broker (part of QosCosGrid Infrastructure)	Y	View
qcg.reef.man.poznan.pl	QCG.Computing	qcg.reef.man.poznan.pl:19000	QCG-Computing (part of QosCosGrid Infrastructure)	Y	View
qcg.reef.man.poznan.pl	QCG.Notification	qcg.reef.man.poznan.pl:19001	QCG-Notification (part of QosCosGrid Infrastructure)	Y	View



WP5: Vertical Integration



25.11.2011

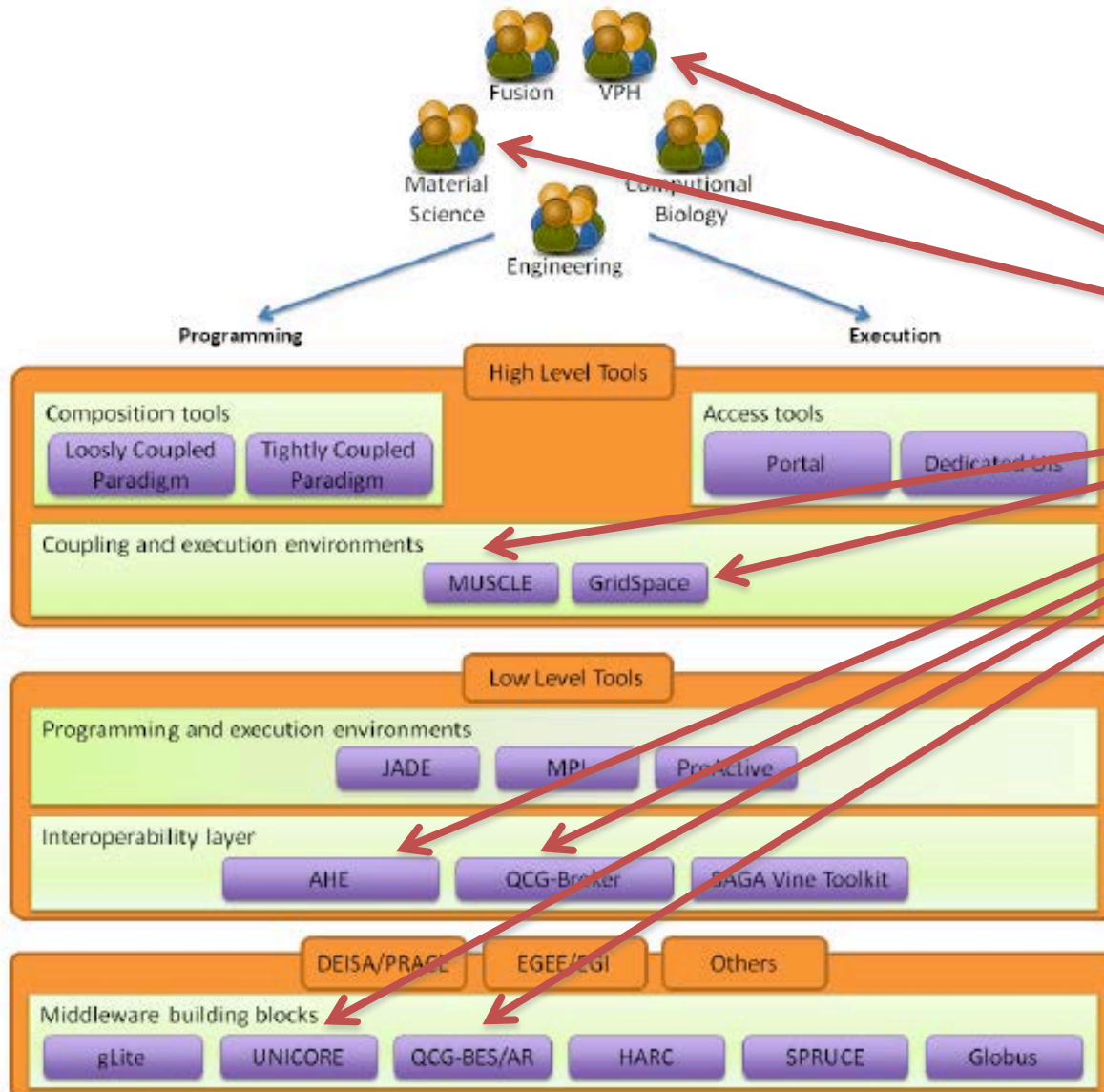
Krzysztof Kurowski, Mariusz Mamoński,
Tomek Piontek and Bartosz Bosak

Overview and goals



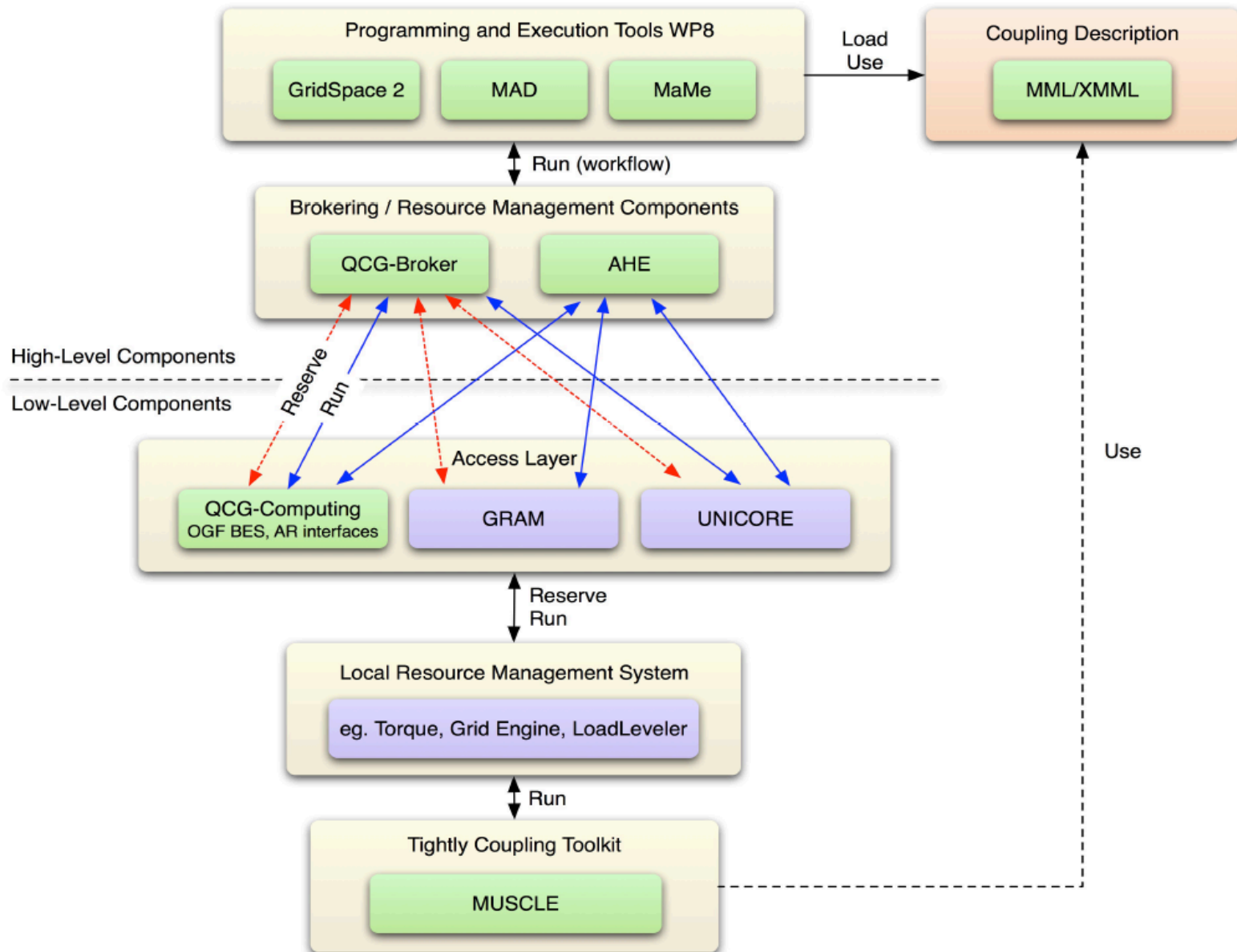
- Ensure top-down and bottom-up vertical software and e-Infrastructure services integration
- Support of large scale multidisciplinary multiscale computing defined by the MAPPER user communities (WP4)
- Help to introduce new sustainable e-Infrastructure services and tools (WP6)
- Integrate and benchmark MAPPER e-Infrastructure with new application, programming and execution tools (WP7, WP8)

Achievements



Components selected for the
1st MAPPER review two real
demonstrations

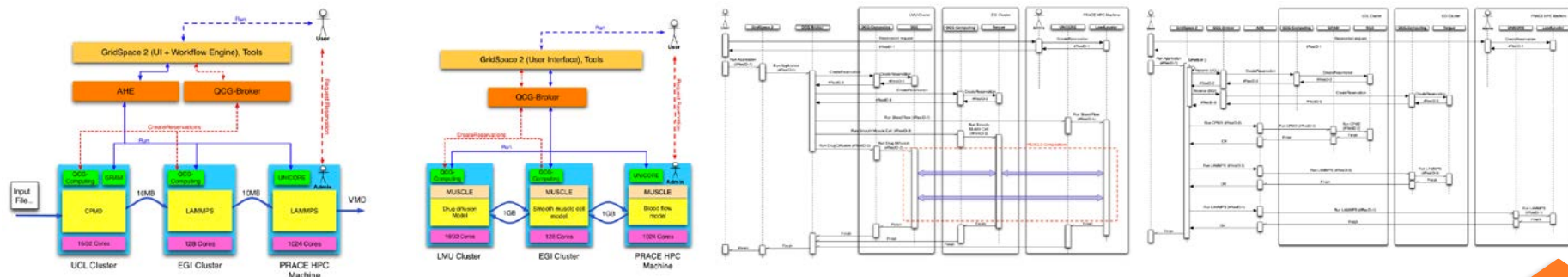
Achievements



Milestones and Reports



- Task 5.1: MAPPER software and service validation tests and releases (M1 - M36)
 - D5.1 Report on the Inventory of Deployed Services (M6)
 - Update in M18
- Task 5.2: Vertical integration plan (M3 - M12)
 - D5.2 MAPPER vertical integration plan (M12)
 - Update in M18



Future Plans



- Support for new MAPPER application tools, execution and coupling environments (new use-cases, new features, etc.)
- Validation and integration with external software components (e.g. SAGA, SHIWA)
- Official software releases according to the Task force agreements for EGI and PRACE
- Two important internal milestones in M18 (D5.1 and D5.2 updates)



Poznan Supercomputing and Networking Center
(PSNC)



krzysztof.kurowski@man.poznan.pl